



www.KCRacing.net

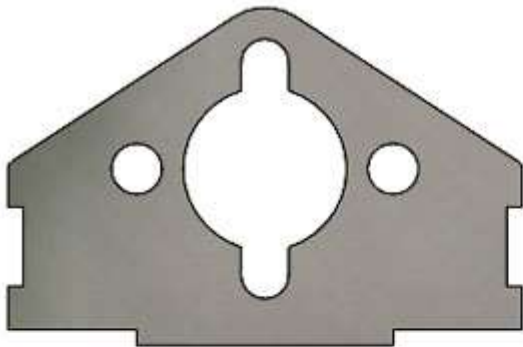
# TECH CORNER

## BLDC Mounts

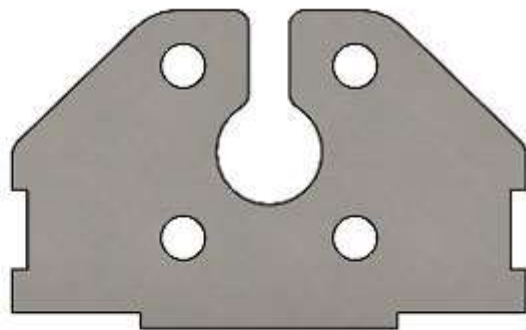
Brushless motors are available in many different mounting bases. The common mounting bases used in Slot Cars are a 9mm x 9mm or a 12mm x 12mm pattern.

Many KC Racing BRUSHLESS Drag and Dragster chassis are available in configurations to accept the widely used motor bases. Below are the motor mounts in the 2SS & 3SS model lineup.

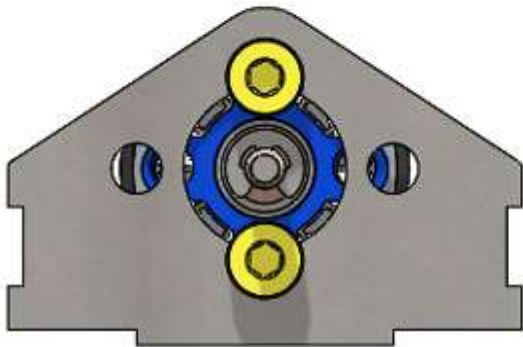
Some kits are dedicated to 12x12 mounts such as the KCR-SW4 Sidewinder Kit. Carefully read the descriptions of the kits to determine if the motor you are intending to use will fit.



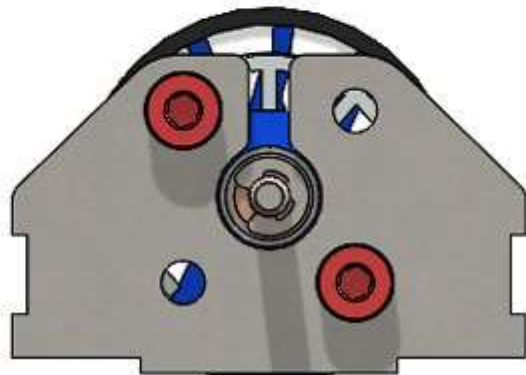
The OG mount accepts FK, PS4001 type motors and 9x9 brushless.



This is the 12x12 mount shipped with the 2SS & 3SS Brushless Kits



The OG mount that is standard in a brushed kit mounts a 9x9 brushless motor as shown above.  
  
Use 2 M2x3mm long screws as shown. **Make sure the screws do not touch the windings or wires.**



Use 2 M2x3mm long screws as shown. **Make sure the screws do not touch the windings or wires.**  
  
The mount for a KCR-2SS, -2SS(SHD) and 2SS(HD) is p/n KCR-142SS.  
  
The mount for a KCR-3SS Dragster is p/n KCR-143SS